



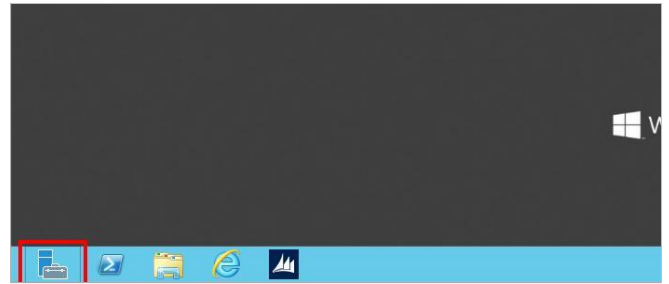
<b>ClickLearn</b>	Administrator
	January 19, 2017
Windows Server 2012 missing WMVCore dll	1/2

No table of contents entries found.

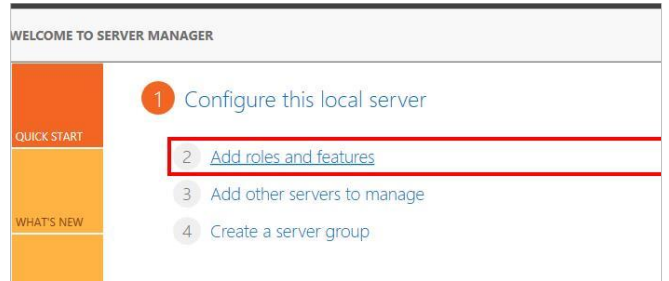
ClickLearn is a client application, but may run on a Windows Server.

If you experience an error by start of ClickLearn, that states that WMVCore.dll is missing, you need to add a feature in the Server Manager.

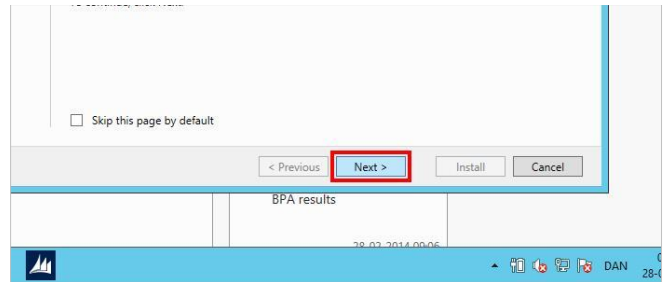
Click on the button **Server Manager**.



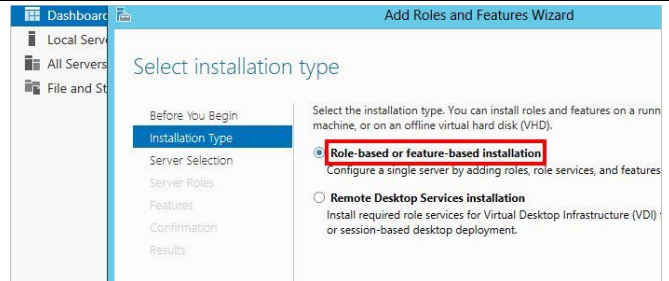
Click on the button **Add roles and features**.



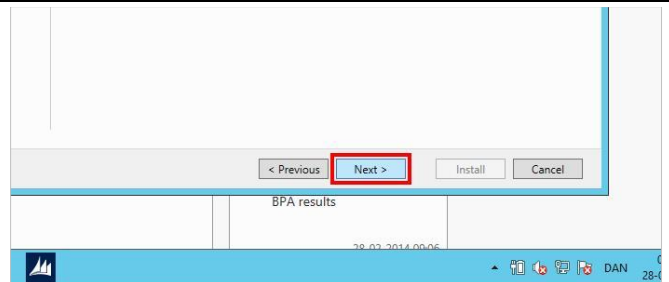
Click on the button **Next >**.



Click on **Role-based or feature-based installation**.

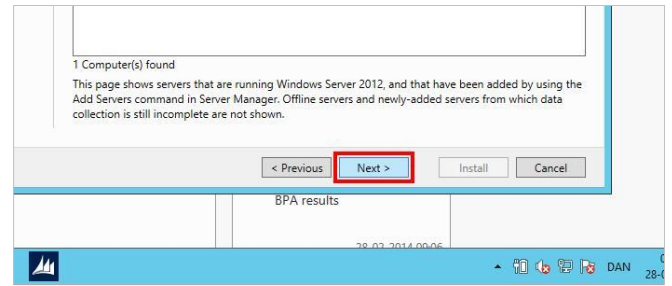


Click on the button **Next >**.

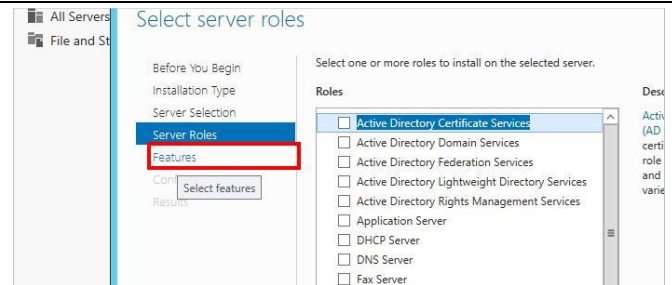


<b>ClickLearn</b>	Administrator
	January 19, 2017
Windows Server 2012 missing WMVCore.dll	2/2

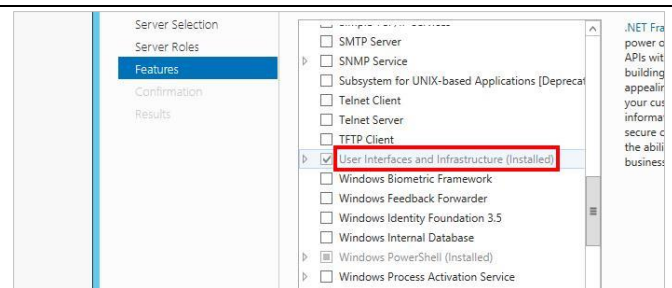
Click on the button **Next >**.



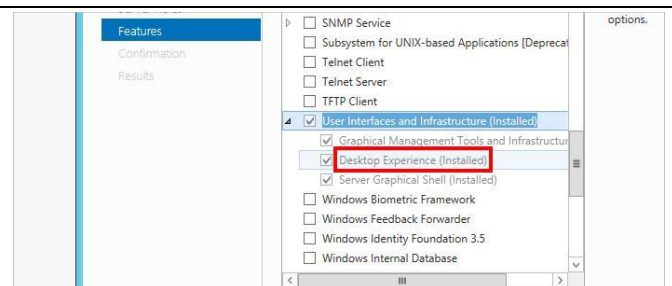
Click on **Features**.



Double click on **User Interfaces and Infrastructure (Installed)**.



Click on **Desktop Experience (Installed)**.



This feature must be checked to avoid the missing WMVCore.dll.

Finish the guide and reboot the server.

**No table of figures entries found.**